

Access and submit
online the VAT
Declaration for
Registered Persons
(EXEMPT)

January 2026

After obtaining an e-ID, which consists of the ID number and a password, log on the MTCA website through the link: mtca.gov.mt

Go to 'eServices' and click on 'VAT'

The screenshot displays the homepage of the Tax & Customs Administration of Malta. The top navigation bar is teal and contains links for 'About Us', 'Contact Us', 'Notary Services', 'eServices', and 'EN'. The 'eServices' dropdown menu is open, listing 'Personal Tax', 'Corporate Tax', 'VAT', 'ECO Contribution', 'FSS', 'International Affairs', 'Customs', and 'Data Providers'. The 'VAT' option is highlighted with a red box. Below the navigation bar, the website features the Tax & Customs Administration logo, a search bar, and the slogan 'DELIVERING TRANSFORMATION'. The main content area is divided into three sections: 'PERSONAL TAX', 'BUSINESS TAX', and 'CUSTOMS'. The 'PERSONAL TAX' section includes a 'my account' link and a user icon. The 'BUSINESS TAX' section includes a 'Tax Practitioners' link and a gear icon. The 'CUSTOMS' section includes a 'more info' link and a box icon. On the right side, there are buttons for 'Online Payments' and 'Phone Businesses 144'.

Click on 'Submit VAT Return/Declaration'

The screenshot shows the website header with navigation links: About Us, Contact Us, Notary Services, eServices, and a language selector set to EN. The Tax & Customs Administration Malta logo is on the left. A search bar with a magnifying glass icon, a filter dropdown, and a search button is present. An 'Online Payments' button is also visible. Contact information includes 'DELIVERING TRANSFORMATION', 'myTax' logo, 'Freephone citizens 153', and 'Phone Businesses 144'. The main content area is divided into three tabs: PERSONAL TAX, BUSINESS TAX, and CUSTOMS. Under the BUSINESS TAX tab, a list of VAT-related services is shown, with 'Submit VAT Return / Declaration' highlighted by a red rectangular box. Other links in the list include 'Registration request for a VAT number', 'Deactivation request for a VAT number', 'Reactivation request for a VAT number', 'Submit VAT Correction', 'Order VAT Fiscal Receipt Books', 'Transfer of Cash Register', and 'Application for a VAT EXO Number (Point of Sale)'. The PERSONAL TAX tab lists 'eServices', 'Personal Tax', 'Corporate Tax', 'VAT', 'ECO Contribution', 'FSS', 'International Affairs', 'Customs', and 'Data Providers'.

PERSONAL TAX

BUSINESS TAX

CUSTOMS

VAT
VAT Online Services for Maltese ID card holders.

A taxpayer or a taxable person who is a physical person may submit online forms in connection with his own personal tax and VAT affairs using his personal e-ID only by using the Personal Services below. He may, instead, appoint a representative to file electronic forms on his behalf and use the Assigned and Delegated Services below.

If a taxpayer or a taxable person is a company, partnership or other legal person, it can only file forms electronically by using the Assigned and Delegated Services below, if it has first appointed a representative for this purpose using the appropriate forms which can be downloaded [here](#).

Please follow the [guidelines](#) that lay down the procedures [here](#).

[How to access & submit the Online VAT Return \(Presentation\)](#)

[VAT online Services \(Presentation\)](#)

[Online submission of VAT Declaration of VAT registered Persons under article 12 \(Presentation\)](#)

Personal Services
Assigned or Delegated Services

Services directly linked to the taxpayer

Services delegated by other taxpayers

Basic e-ID login (e-ID username and password)

Sign-in using your e-ID username and password and either an app on your phone or the digital certificate on your ID Card (you will need a card reader).

Please refer to this [guide](#) for more information and guidance.
Please refer to this [guide](#) to change phone within the two factor authenticator.

[Login](#)
[Login](#)

Click on 'Login' under 'Personal Services' or 'Assigned or Delegated Services'

VAT registered persons filing their personal VAT return are to click on 'Login' under 'Personal Services'

In case the e-ID account is not yet active, please apply for it from Identity Malta through the portal eid.gov.mt

Sign In

EN | MT

Sign in with your e-ID Account*

ID Number ([view sample](#))

Password

Sign In

*If you don't have an e-ID account, kindly contact us during office hours on **2590 4300**.

[Forgot your password?](#)

[Help on how to start using e-ID](#)

Sign in with your electronic ID Card

To use the electronic ID Card, please:

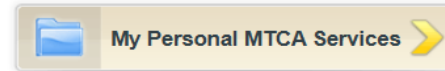
1. Set up the card and reader (see link below for help).
2. Attach the reader to your computer.
3. Insert the ID card into the reader.
4. Click on the image below, and enter your PIN A.

OR



[Set up and use your electronic ID Card](#)

Click on 'My Personal MTCA Services'



Select the year from the dropdown menu 'Load older tax periods'

Tax Documents

Ledger Statement

Change Role

VAT Groups

VAT Group Request List

Approved Groups List

Load older tax periods ▾

Load older tax periods

2024-2025

2022-2023

2020-2021

Click on the year, for example '2025' and click on the tax period (in this case 01.01.2025 – 31.12.2025) and finally click on the 'Submit VAT Return'

TAX & CUSTOMS ADMINISTRATION MALTA

MTCA (VAT Services)

[379369M]

- Tax Documents
- Ledger Statement
- Change Client
- Change Role
- VAT Groups**
 - VAT Group Request List
 - Approved Groups List
 - Rejected Groups List
 - View All Pending Changes
 - View All Completed Changes
 - My Account

2024-2025

2026

2025

VAT VAT

01/01/2025 - 31/12/2025

- Submit Vat Return
- Tax Period Ledger
- Payment
 - Pay Online
 - 6804453750302528 (Click to copy Payment Reference)

Upon clicking the 'Submit VAT Return', the form is displayed accordingly.

VAT Declaration - Period between 01/01/2025 and 31/12/2025 (Due Date 15/03/2026)

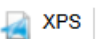
Statement of Sales/Purchases		Value - €
 Sale of Goods	1	0.00
 Provision of Services	2	0.00
 Purchases of stock for re-sale	3	0.00
 Purchases of capital assets during the year	4	0.00

I declare that all the entered details and information are true, correct and complete.

Save As Draft

Submit

Clear Page

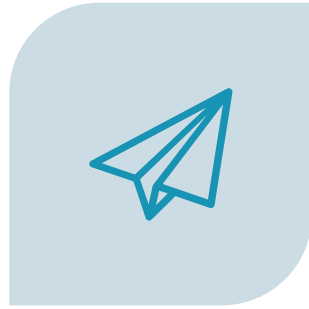


- Fill in the appropriate boxes in the form displayed above,
- Click the tick box, where a declaration is being made,
- 'Submit' the form or 'Save it As Draft'. If the option 'Save As Draft' is being selected, please ensure to submit the form till the due date and;
- Once the form is submitted an acknowledgement email will be received.

Support



PHONE 144



SEND AN EMAIL TO
SERVIZZ@GOV.MT

VISIT

- **Business First,
Ċentru Joseph Grech, 2nd Floor,
Cobalt House, Mdina Road, Mrieġel**

or

- **Gozo MTCA Office,
Republic Street,
Rabat, Gozo**



TAX & CUSTOMS
ADMINISTRATION
MALTA



THANK YOU.