

ICS2

ENTRY SUMMARY DECLARATION: KEY REQUIREMENTS

Who is responsible?

The **carrier or the filing party** is legally responsible for the accuracy and completeness of the Entry Summary Declaration (ENS).

Missing or incorrect information may result in delays and penalties.



ICS2 filing rules



RESPECT the time limits set out in the legislation.



PROVIDE accurate and complete ENS data for each shipment at master, (lowest) house and goods item level.



DECLARE house consignment level data for each shipment and item, without consolidating into a single generic entry.

*****_

DECLARE items with different Harmonised System (HS six-digit) codes separately in the house consignment declaration.



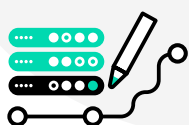
DO NOT USE unacceptable goods descriptions, including 'unknown' or 'not available'.



DECLARE the consignor and consignee as defined at the lowest house level; these must be different from the carrier, freight forwarder, (de)consolidator, postal operator or customs agent.



RESPOND promptly to customs requests for additional information or data amendments (referrals).



SUBMIT amendments only when relevant data has changed (not for formatting or cosmetic corrections).



LODGE arrival and presentation messages in accordance with guidance documents.



CORRECT AND RE-SUBMIT ENS messages returned with error codes.



DO NOT USE filing types F10, F13, F28 and F29 for e-commerce shipments.

ICS2 data must be provided at the lowest house level

The first step is to identify the actor who holds the lowest house-level data in the supply chain. Once identified, this actor either shares the data with the carrier for a single ENS filing or submits it as an [ICS2 multiple filing](#). In the following two scenarios, Consolidator B (Scenario 1) and Shipper (Scenario 2) hold the lowest house-level data, and the ICS2 multiple filing process is used.

Scenario 1



Responsibilities

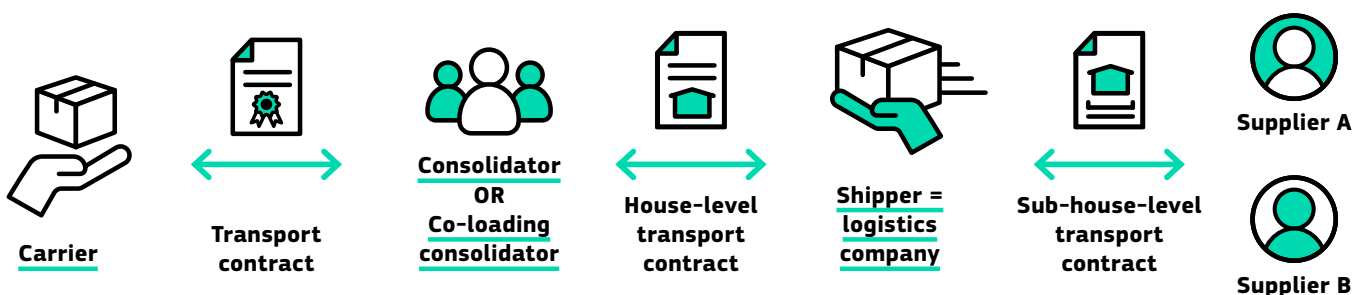
Consolidator A needs to:

- obtain all required ENS data from Consolidator B (the co-loading consolidator) at the level of the (lowest) house consignment;

OR

- indicate the [Economic Operators Registration and Identification \(EORI\) number](#) of Consolidator B in its data filing, in which case Consolidator B is obliged to fill in all required data into ICS2 at the level of the (lowest) house consignment.

Scenario 2



Responsibilities

The shipper (acting as logistics company for multiple suppliers):

- files ICS2 data directly for all sub-house transport contracts (provided the shipper has an EORI number);

OR

- shares all required ICS2 ENS data with the consolidator who will file the data.

